

# SERVICE INFORMATION

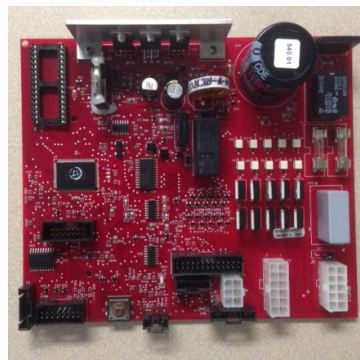
## M146.1

**MODELS AFFECTED:** All Coke SBC, S3D, and SIID Stack Venders.

**MODEL NUMBERS:** 24VDC SBC Controller used in P Series, DN640, DN448, and 115VAC SBC Controllers used in E-Model, DNCB 1 ¼" Deeper and T-Model Venders.

**Revised:** 3/12/19

**Reason:** To provide instructions for installing a New SBC All in One Control Board in venders with SBC, S3D, or SIID Control Boards.



### For P Series Venders order:

- **111333 (old # 64100040) New SBC Coke Controller Assembly**

Includes:

- 101247 (old # 80493052) ASSY Coke SBC All In One Controller
- 400897 (old # 80493055) (550.21 new release) Software Coke All in One SBC controller
- 101026 (old # 80491397) DEX harness (15" long) and 100162 (old # 80080165) DEX Harness Nut.

### For E-Model, DNCB & T-Model Venders order:

- **111333 (old # 64100040) New SBC Coke Controller Assembly**

(Order when replacing an existing SBC Controller)

Includes:

- 101247 (old # 80493052) ASSY Coke SBC All In One Controller
- 400897 (old # 80493055) (550.21 new release) Software Coke All in One SBC controller
- 101026 (old # 80491397) DEX harness (15" long) and 100162 (old # 80080165) DEX Harness Nut.

# **SERVICE INFORMATION**

- **112453 (old # 62901060) SBC Conversion Controller S3D With Out Display Board Kit**  
(Order when replacing a S3D or SIID Board w/ 14 segment display)

Includes:

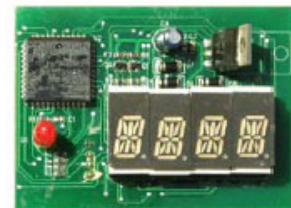
- 111333 (old # 64100040) New All in One SBC Controller
- 100765 (old # 80492083) MDB S3D to SBC 25" Conversion Harness
- 100764 (old # 80492066) SBC 21" Legacy Display Harness
- 101026 (old # 80491397) DEX harness (15" long) and 100162 (old # 80080165) DEX Harness Nut.

The following parts/additions are required to convert a S3D to a SBC in Coke Wave Door Venders:

- 100909 (old # 80492108) LMV 12 Select Door Harness (for 13 Select Venders)  
Additionally – Model number must be changed to the new number of selections



**SIID 14-Seg**



**S3D**

New All in One Controller will not work with 7 Segment Displays, you will need to update to 14 Segment Display.

- New controller software 550.21 programs the same as old controller software versions 550.11, 771.41, 391.41, 230.01, & 390.51.
- Note: Software is not backward or forward compatible in Controllers.

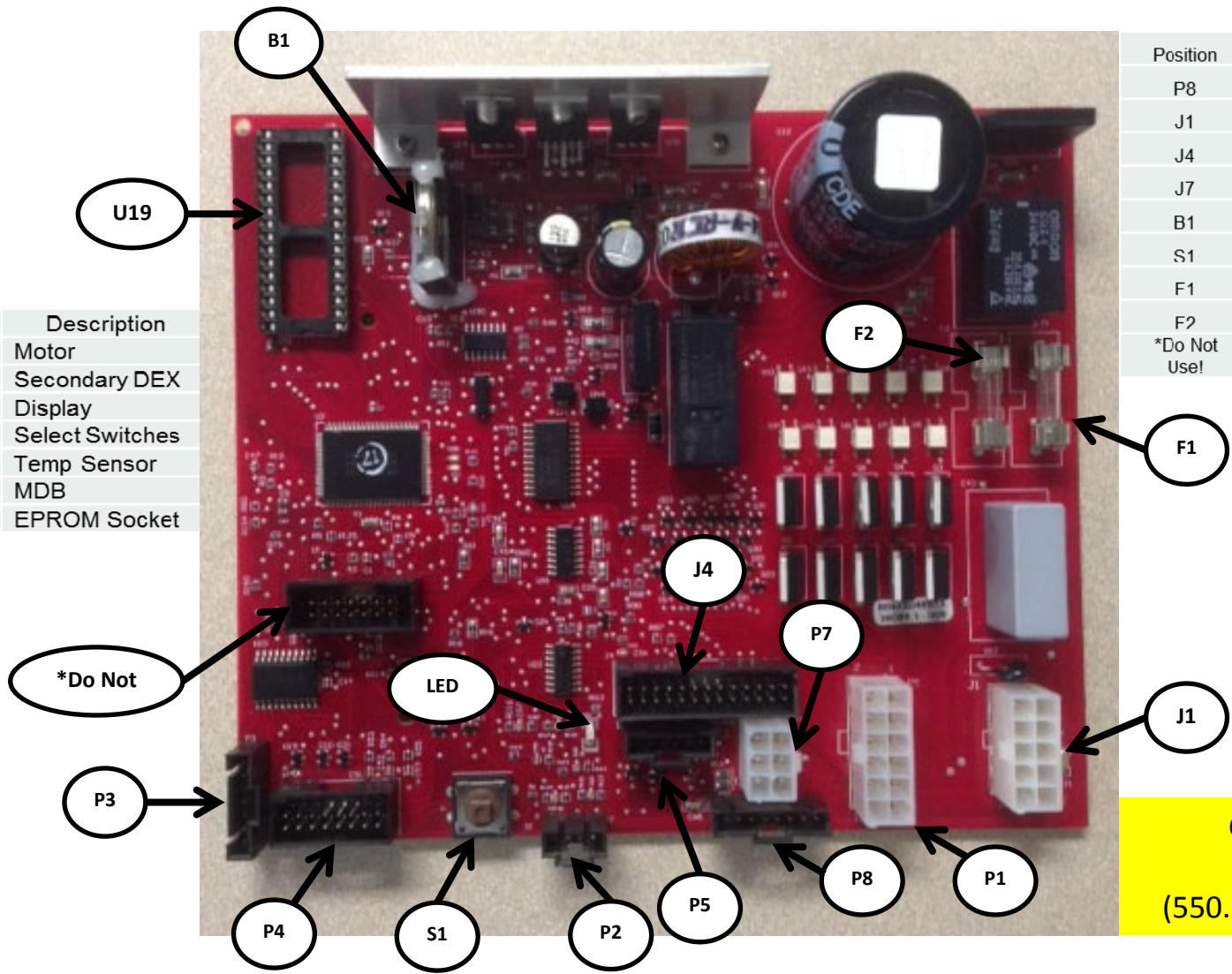
If you have any issues please contact your Crane Merchandising Systems Representative or the Technical Service Department at 803-266-5001.

# CRANE<sup>®</sup> MERCHANDISING SYSTEMS

## SERVICE INFORMATION

Position	Description
P1	Motor
P2	Secondary DEX
P3	Display
P4	Select Switches
P5	Temp Sensor
P7	MDB
U19	EPROM Socket

Position	Description
P8	Energy Management
J1	AC Power
J4	Home Switch
J7	Optional
B1	Battery
S1	Service Switch
F1	1 6A Transformer AC Power
F2	6 3A Motor Power
*Do Not Use!	Crane Engineering Use Only (covered by metal board cover)



Coke Software  
80493055  
(550.21 is initial release)

# SERVICE INFORMATION

New controller software 550.21 programs the same as old controller software versions 771.41, 391.41, 230.01, & 390.51.

Note: Software is not backward or forward compatible in the different Controllers.

## Notes:

The new All in One Controller will replace both the:

- 24VDC SBC Controllers used in P Series, DN640, DN448, and
- 115VAC SBC Controllers used in E-Model, DNCB 1 ¼" Deeper and T-Model Venders which had a microprocessor that went end of life and is no longer available.

The wiring harness for power connects the AC or DC to the correct pin.

The software can detect which type of machine it is in by looking for cam switches and sold out switches.

The software was developed to run all models. This covers every S3D, SIID, & SBC DNCB 1 ¼ " Deeper, E-Model and T-Model Venders made by Dixie-Narco. Currently there is no Coke 12 select or 13 select Door Harness designed for use in the legacy CWD (Coke Wave Door/Marketing Machine) or Coke LMV (Lean Marketing Vender) doors. Most of the CWD and LMV Doors have been converted to Chameleon Doors.

Below is the list of model numbers the COKE SBC will configure for. Example "DN180-5, 5-5 is 5 selections, 5 columns.

- **5 Column Venders**

"DN180-5", 5-5; "DN300-5", 5-5

- **6 Column Venders**

"DN276-6", 6-6; "DN360-6", 6-6; "DN522T-6", 6-6; "DN630T-6", 6-6

- **7 Column Venders**

"DN276E-7", 7-7; "DN276E-8", 8-7; "DN276E-9", 9-7; "DN276E-12", 12-7; "DN276E-13", 13-7

- **8 Column Vender**

"DN368-7", 7-8; "DN440-7", 7-8; "DN501T-7", 7-8; "DN600T-7", 7-8

- **9 Column Venders**

"DN501E-8", 8-9; "DN501E-9", 8-9; "DN600E-8", 8-9; "DN600E-9", 9-9; "DN501E-10", 10-9; "DN600E-10", 10-9; "501E\_CW\_9", 9-9; "600E\_CW\_9", 9-9; "DN501E-12", 12-9; "DN600E-12", 12-9; "501E\_CW\_12", 12-9; "600E\_CW\_12", 12-9; "DN501E-13", 13-9; "DN600E-13", 13-9; "501E\_CW\_13", 13-9; "600E\_CW\_13", 13-9.

- **10 Column Venders**

"DN348-9", 9-10; "DN414-9", 9-10; "348-9", 9-10; "414-9", 9-10.

# **SERVICE INFORMATION**

## **Frequently asked questions:**

- Why was the software change to 550.21?
  - Software was change to resolve an issue which caused some cashless devices not to work and show the message “Disabled from VMC”.
- Why was the control board changed?
  - New All in One SBC Controller replaces existing controller which had a microprocessor and other parts that went end of life and are no longer available.
- How does the new board work in both 24VDC and 115VAC applications?
  - The wiring harness for power connects the AC or DC to the correct pin.
  - The software can detect which type of machine it is in by looking for cam switches and sold out switches.
- Why was the DEX phono port removed from the control board?
  - The onboard DEX phono port was removed due to board failures caused by mishandling by Technicians and/or Route Drivers when downloading DEX information from the venders.
- What DEX Harnesses work with the new board?
  - Crane provides the following that may be ordered through After Market Parts:
    - 101026 (old # 80491397) DEX Harness 15” long (included when ordering board kits listed on pages 1 & 2)
    - 100730 (old # 80490783) DEX Harness 66” long
    - 100162 (old # 80080165) Nut, DEX Harness (included when ordering board kits listed on pages 1 & 2)
- If I have more questions?
  - Please contact
    - Your Crane Merchandising Systems Representative or
    - Crane Merchandising Systems Tech Support in Williston, SC:
      - phone: (803) 266-5001, press 4 for Tech Support
      - Email: [service@cranems.com](mailto:service@cranems.com)